

RETRO-FIT ELECTRIC LIFTER

INSTALLATION INSTRUCTIONS

FOR REPLACING AN EXISTING MANUAL LIFTER



**Scan the QR code below for follow-along
video instructions on assembling your
Electric Lifter.**



**A power drill / screwdriver is recommended
for assembling this product, allowing for an
easier and faster build.**



WARNING

Please refrain from testing the electric lift prior to completing assembly.



WARNING: Gravity-Fed Lifter

Confirm wooden platform is properly mounted and unobstructed before use.

If movement is restricted, turn off immediately to avoid pulley unravelling.

Need help? Call Head Office: 02 8881 2111

COMPONENTS



Electric Lifter



Lifter Rails



Lifter Straighteners



Power Adapter + Cable



Cable Clips



Switchbox

ELECTRIC LIFTER

INSTALLATION INSTRUCTIONS

NOTE: Photos depict installation on the Sovereign MKIII, but otherwise, installation is much the same on every compatible HORN cabinet.



1.) Remove the Lifter & Accessories from its packaging. Refer to the Components page of this manual to ensure you have all the necessary components to assemble and install the Electric Lifter in your HORN compatible cabinet.

ELECTRIC LIFTER

INSTALLATION INSTRUCTIONS



2.) Cut the plastic cable ties on the Lifter holding the looped metal wires in place.

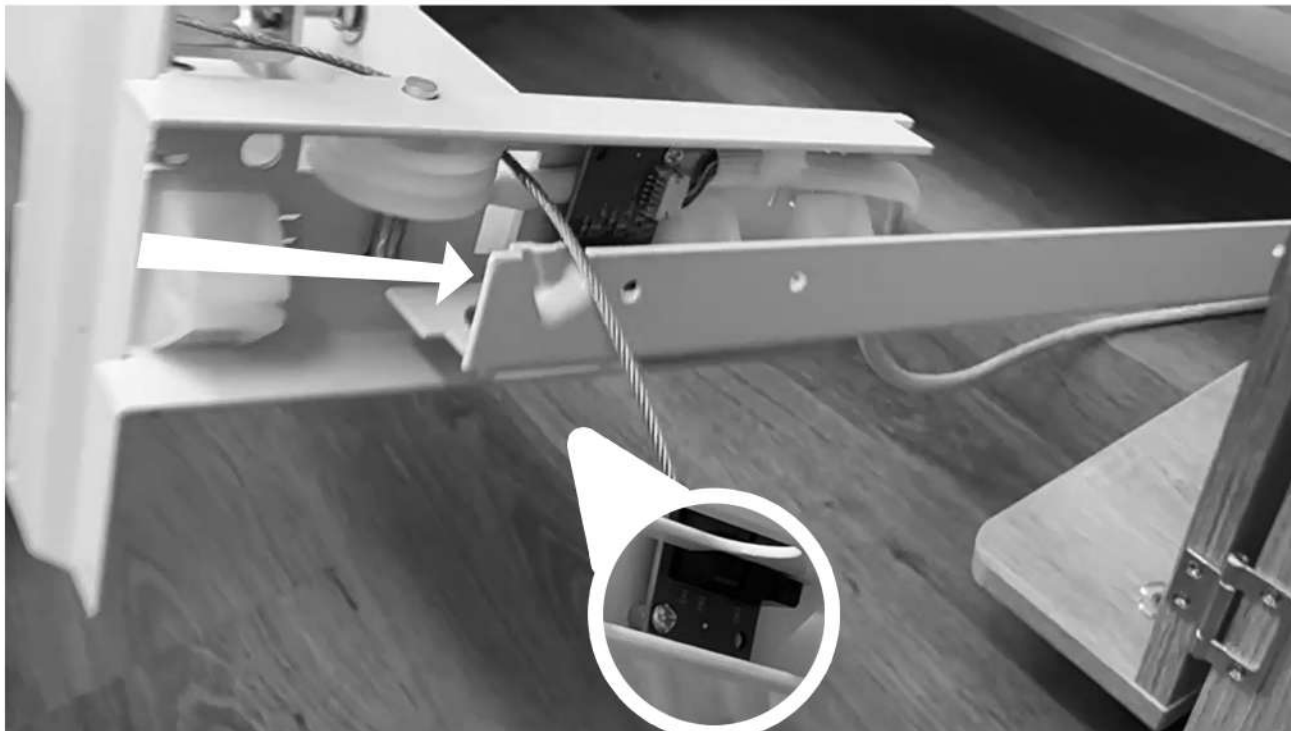


3.) Position the Lifter Rails into place and secure the bottom screws to your cabinet using the Lifter screws provided with your main cabinet's box.

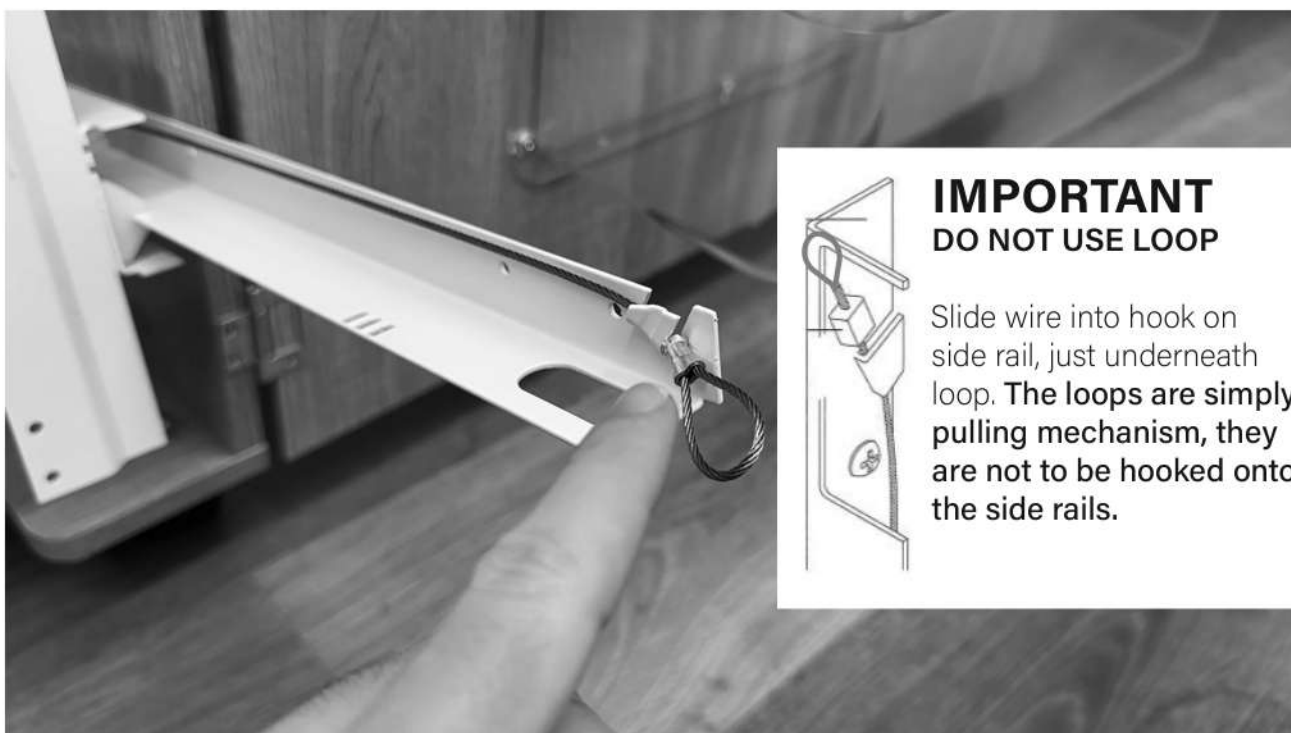
ELECTRIC LIFTER

INSTALLATION INSTRUCTIONS

4.) Slide the Lifter into the side rails between the guides.



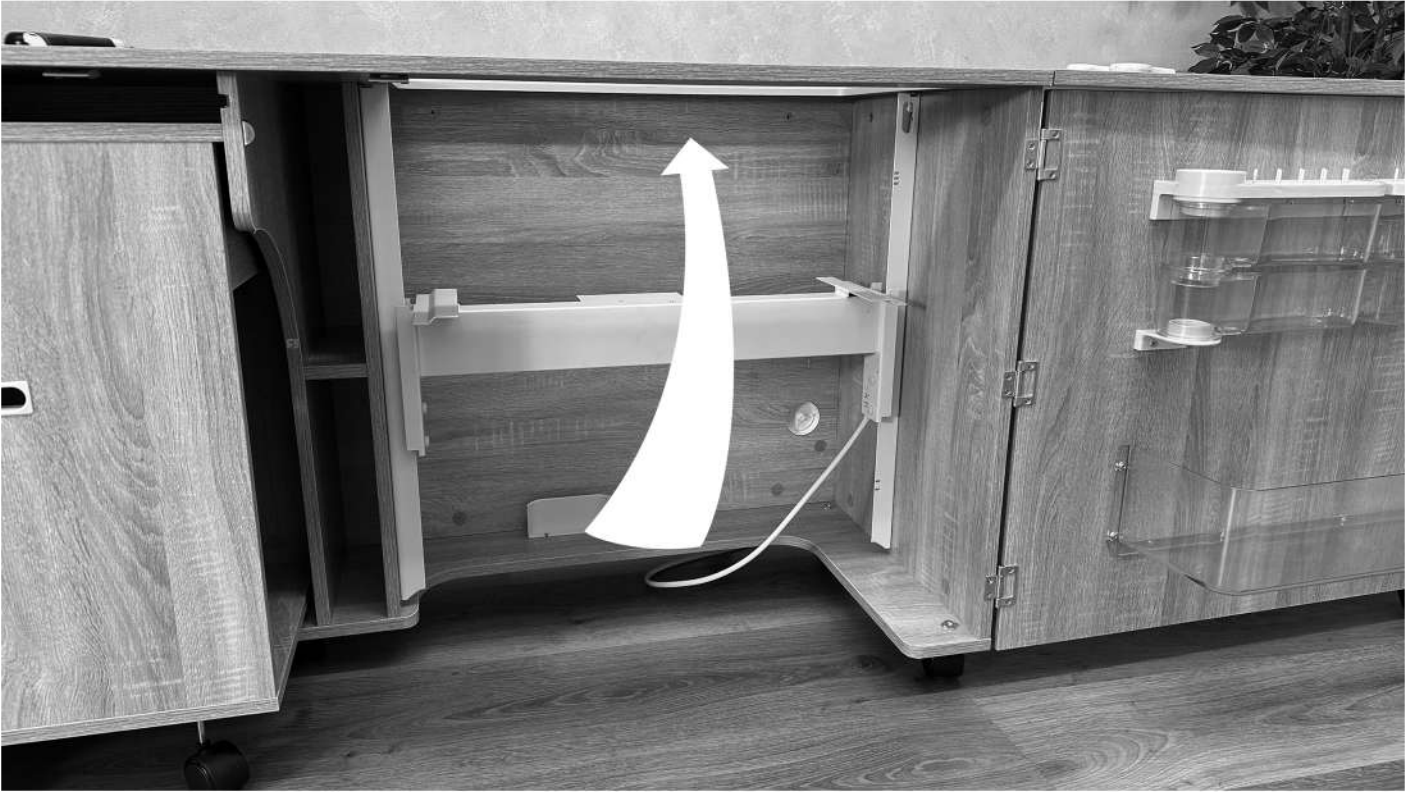
5.) Ensure the looped wire is hooked to the top of the rails on both sides.



ELECTRIC LIFTER

INSTALLATION INSTRUCTIONS

6.) Lift the Lifter and Lifter Rails into place and screw the Middle and Top screws to your cabinet.



7.) Using a power drill, place the switch box to your ideal position, drill screw holes and screw into place.



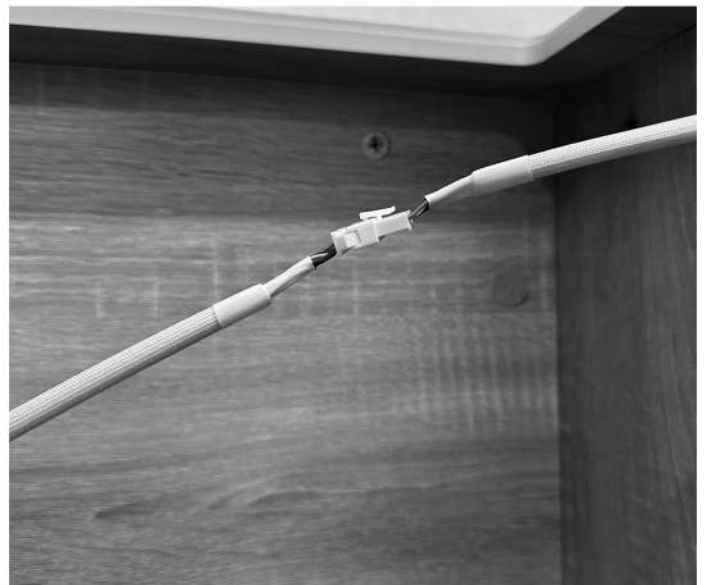
ELECTRIC LIFTER

INSTALLATION INSTRUCTIONS

8.) For cable management, feed the Switch Box's cable through the cutout of the Lifter Rail.



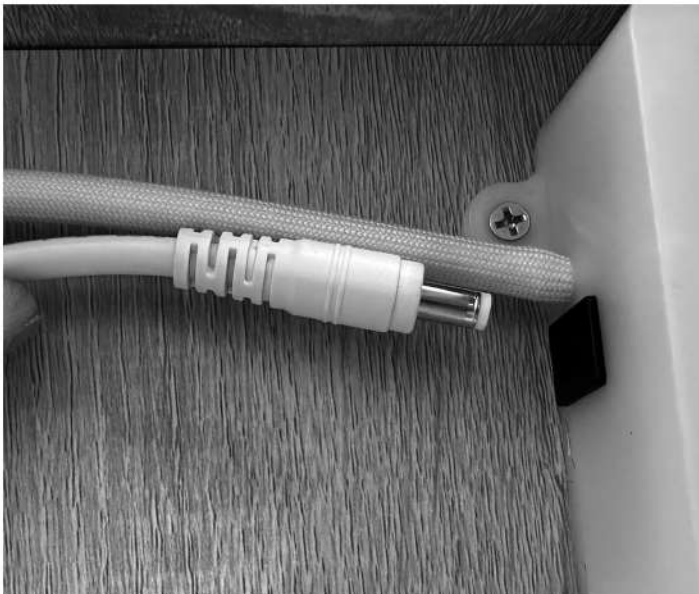
9.) Plug the Switch Box cable to the Electric Lifter.



ELECTRIC LIFTER

INSTALLATION INSTRUCTIONS

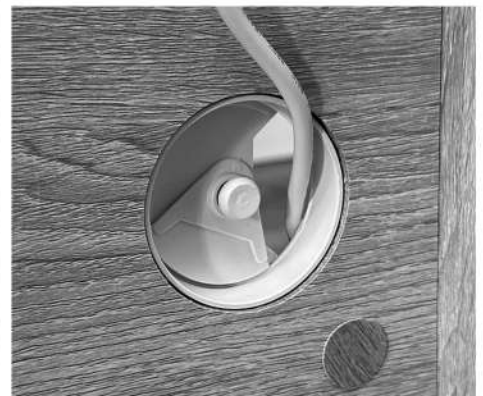
10.) Plug the Power Adapter to the Electric Lifter's Switch Box.



ELECTRIC LIFTER

INSTALLATION INSTRUCTIONS

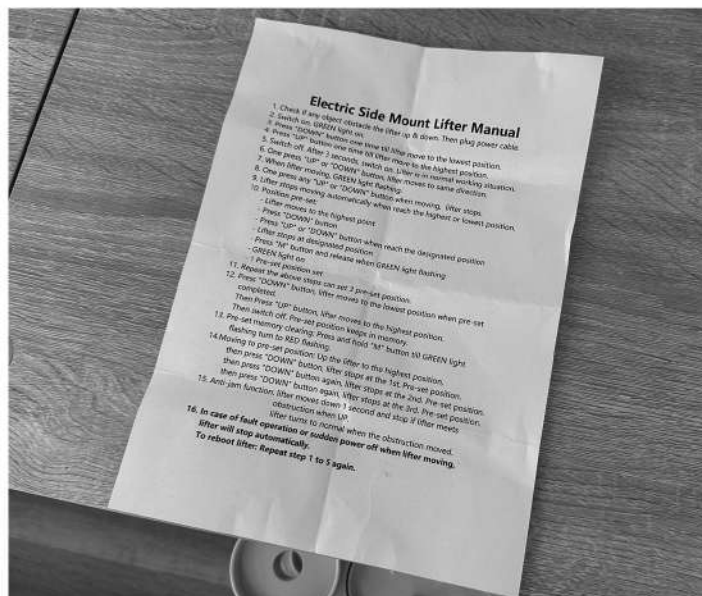
OPTIONAL: Cable Management with Adhesive Cable Clips.



ELECTRIC LIFTER

INSTALLATION INSTRUCTIONS

11.) Plug in the Lifter to Power and verify Electric Lifter Procedures.



12.) Press the Down Button on the Switch Box, and use the Lifter Board to apply even pressure to the Lifter as it lowers for the first time.



ELECTRIC LIFTER

INSTALLATION INSTRUCTIONS

13.) Place the Lifter Board on the Lifter and screw into Place



Electric Lifter - Operation

This is a **gravity feed lifter** that requires platform for weight. **DO NOT TEST** until cabinet is fully assembled.

INITIAL SETUP

1. Place your machine on the lifter platform as the weight of your machine may affect the height of the platform and thus the ideal memory position.
2. Turn on power.

SETTING LIFTER REFERENCE POINT. YOU MUST PERFORM THIS STEP FIRST.

1. Press the down button first and allow the platform to reach the bottom. **If Platform is not moving turn off immediately** – This could be due to an issue with the installation. This will need to be resolved before continuing.
2. Once the platform has reached the bottom, turn off the power on the control panel for 10 seconds, then turn back on. Once this procedure is complete, the control panel has now set its reference point.
3. Press the up button so that the platform reaches the top.
4. This up & down movement can be repeated a few times to help stretch the cable and ensure everything is working smoothly.

SETTING MEMORY POSITION

1. Ensure the platform is in the bottom position.
2. Press the up button until your machine is at the desired height, then hit the down button to halt the lifter.
3. Hold the memory button until the green light flashes on the control panel, then release.
4. To test the memory is working, you can drop the platform back to the bottom position and bring it back up again. It should stop at your specified height.
5. If you want to wipe the memory position, simply hold the memory button until it flashes red. This can be done at any height. Note this will wipe all 3 memory positions at once if you have set multiple.
6. Repeat until satisfied. It can take several tries to get it perfect, as the cables adjust. Once working, it is very consistent.